

LEDVANCE Luminaires

CCT SELECTABLE DOWNLIGHT GIMBAL

PERFORMANCE CLASS

Application

The LEDVANCE PERFORMANCE CLASS CCT Selectable Downlight Gimbal is a new generation of slim luminaires oriented to provide accent lighting, thanks to its narrow beam angle (45°). Offering energy savings up to 88% and excellent high color rendering (CRI 90), you may select the preferred brightness thanks to its phase-cut dimming which ranges from 10% to 100%. This luminaire is designed for residential, hospitality, retail or any low bay application.

Benefits and Features

- Modern styling and slim form provide an update from traditional designs
- Phase-cut dimmable
- High color rendering (CRI >90)
- Beam angle 45°
- Tilting lenses 90°
- Up to 79 LPW
- 5 CCT selectable
- Offered in 7, 9 or 13 watts
- Uniform, glare free illumination
- Wet rated
- Energy savings up to 88%

Electrical

- 120VAC
- Power Factor >0.9

Rated Life

- 50,000 hours (L₇₀)

Warranty

- 5-year
- NLB Trusted Warranty Program

Operating Temperature

- -4°F to +104°F (-20°C to +40°C)

Certifications and Listings

- cETLus
- RoHS
- FCC
- ENERGY STAR®
- T24
- IC rated



Wattage Comparison

| Traditional Source | Traditional System Wattage | LED System Wattage | Energy Savings |
|--------------------|----------------------------|--------------------|----------------|
| Fluorescent | 60W | 7W | Up to 88% |
| Fluorescent | 65W | 9W | Up to 86% |
| Fluorescent | 75W | 13W | Up to 83% |

Installation

- Suitable for use in closets, compliant with NFPA 70, NEC section 410.16 (A)(3) and 410.16 (C)(5)
- Hardwire
- Ceiling cut out sizes:
 - 3": 3.3" (85mm)
 - 4": 4" (102mm)
 - 5": 5" (128mm)



Specification Data

| | |
|-------------|------|
| Catalog # | Type |
| Project | |
| Comments | |
| Prepared by | |

Ordering Guide

| LEDRT | X | G | XXXX | SC3 | BL |
|--------------------|---------|------------|-------------|-------------------------------------|--------------|
| Product Name | Size | Lamp Type | Lumens | Selectable Color Temperature | Color/Finish |
| LEDRT = LED | 3 = 3in | G = Gimbal | 500 = 500lm | 2700K, 3000K, 3500K, 4000K or 5000K | BL = Black |
| Retrofit Downlight | 4 = 4in | | 600 = 600lm | | |
| | 6 = 6in | | 950 = 950lm | | |

Ordering Information

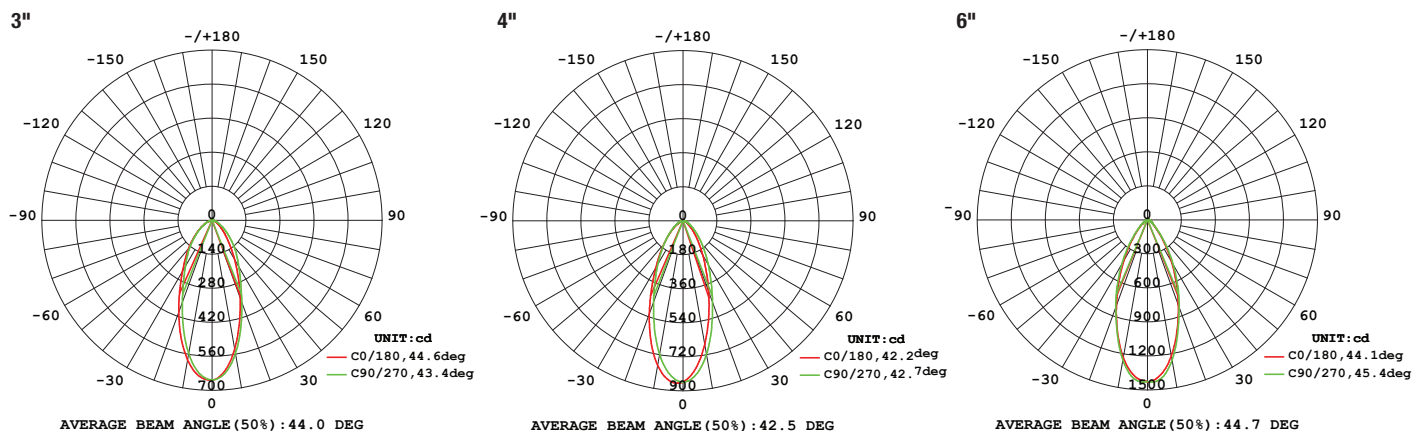
| Item Number | Ordering Abbreviation | Power (W) | Input Voltage (V) | Base Type | Replaces | Average Rated Life (hrs.) | CCT | Total Lumens (lm) | CRI | Power Factor | Bulb Finish | Finish | ENERGY STAR® | T24 |
|-------------|-----------------------|-----------|-------------------|-----------|----------|---------------------------|---------------------------|-------------------|-----|--------------|-------------|--------|--------------|-----|
| 65794 | LEDRT3G500SC3BL | 7 | 120 | Hardwire | 60W | 50,000 | 2700/3000/3500/4000/5000K | 500 | >90 | >90 | Frosted | Black | Yes | Yes |
| 65795 | LEDRT4G600SC3BL | 9 | 120 | Hardwire | 65W | 50,000 | 2700/3000/3500/4000/5000K | 600 | >90 | >90 | Frosted | Black | Yes | Yes |
| 65796 | LEDRT6G950SC3BL | 13 | 120 | Hardwire | 75W | 50,000 | 2700/3000/3500/4000/5000K | 950 | >90 | >90 | Frosted | Black | Yes | Yes |

Energy Savings

| Basic Product Description | LED Life (hrs) | LED Lumens | Similar Incandescent | Incandescent Lumens | Watts Saved | Energy Savings* | LED Life vs Incandescent |
|---------------------------|----------------|------------|----------------------|---------------------|-------------|-----------------|--------------------------|
| LEDRT3G500SC3BL | 50,000 | 500lm | 2000 | 600 | 53 | \$292 | 25x |
| LEDRT4G600SC3BL | 50,000 | 600lm | 2000 | 700 | 56 | \$308 | 25x |
| LEDRT6G950SC3BL | 50,000 | 950lm | 2000 | 900 | 62 | \$341 | 25x |

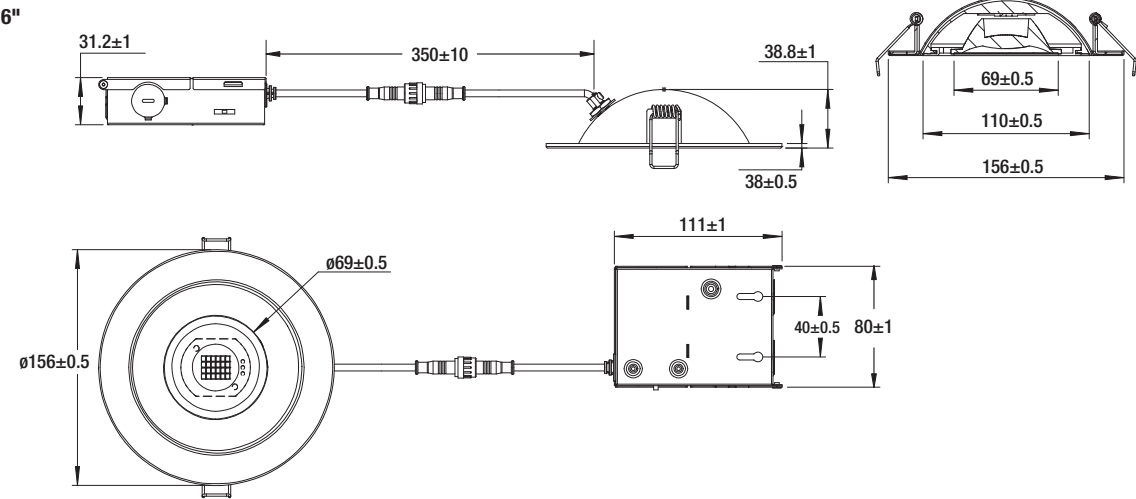
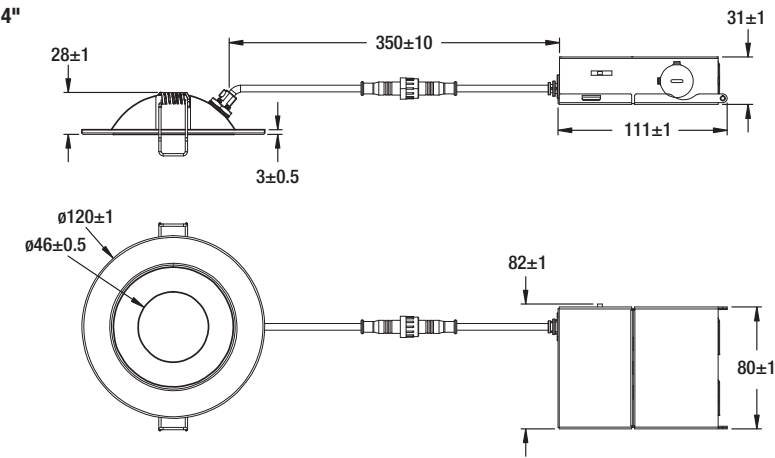
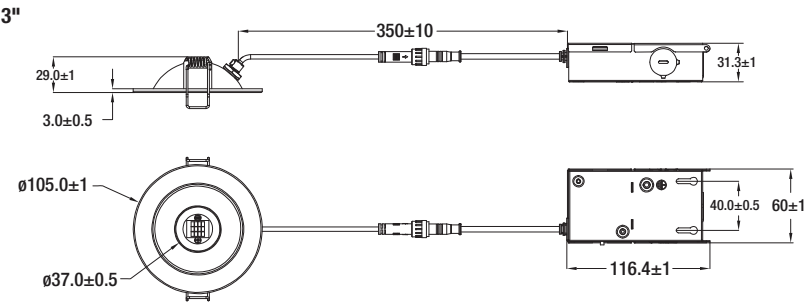
*Energy savings over life of lamp calculated at \$0.11/kWh

Photometric Information



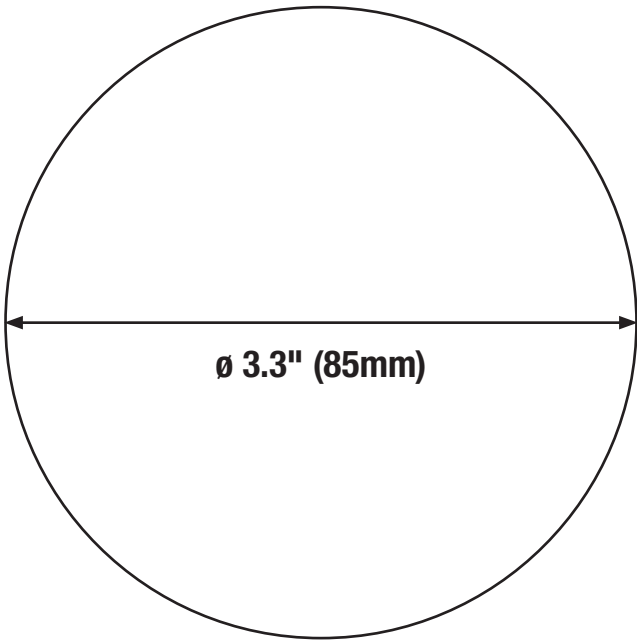
Physical Information

| Luminaire Description | Height (in) | Diameter (in) |
|-----------------------|-------------|---------------|
| 3" | 1.14 | 4.1 |
| 4" | 1.18 | 4.72 |
| 6" | 1.53 | 6.14 |

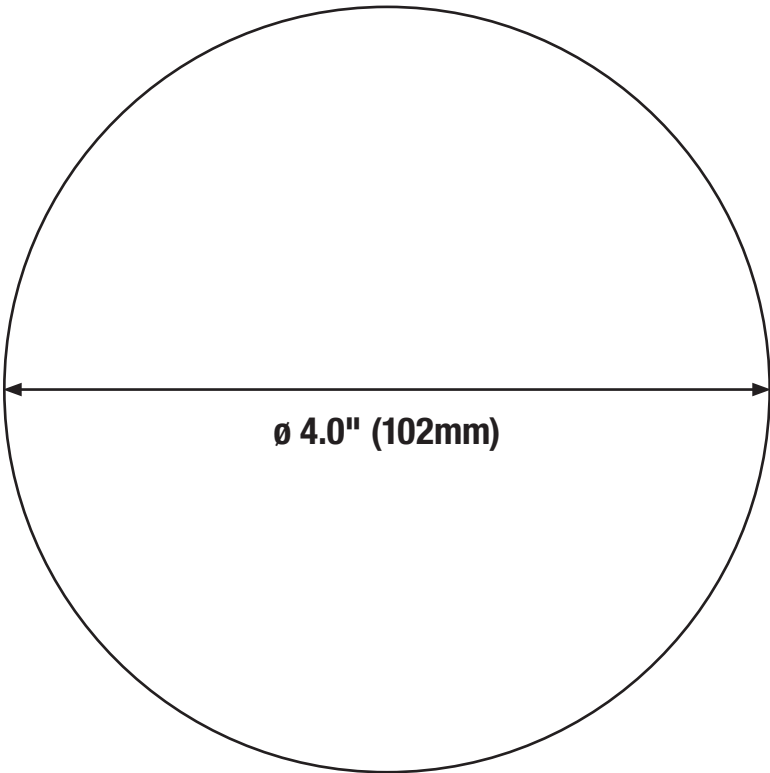


Hole Cut Templates

RT3 Hole Cut Template

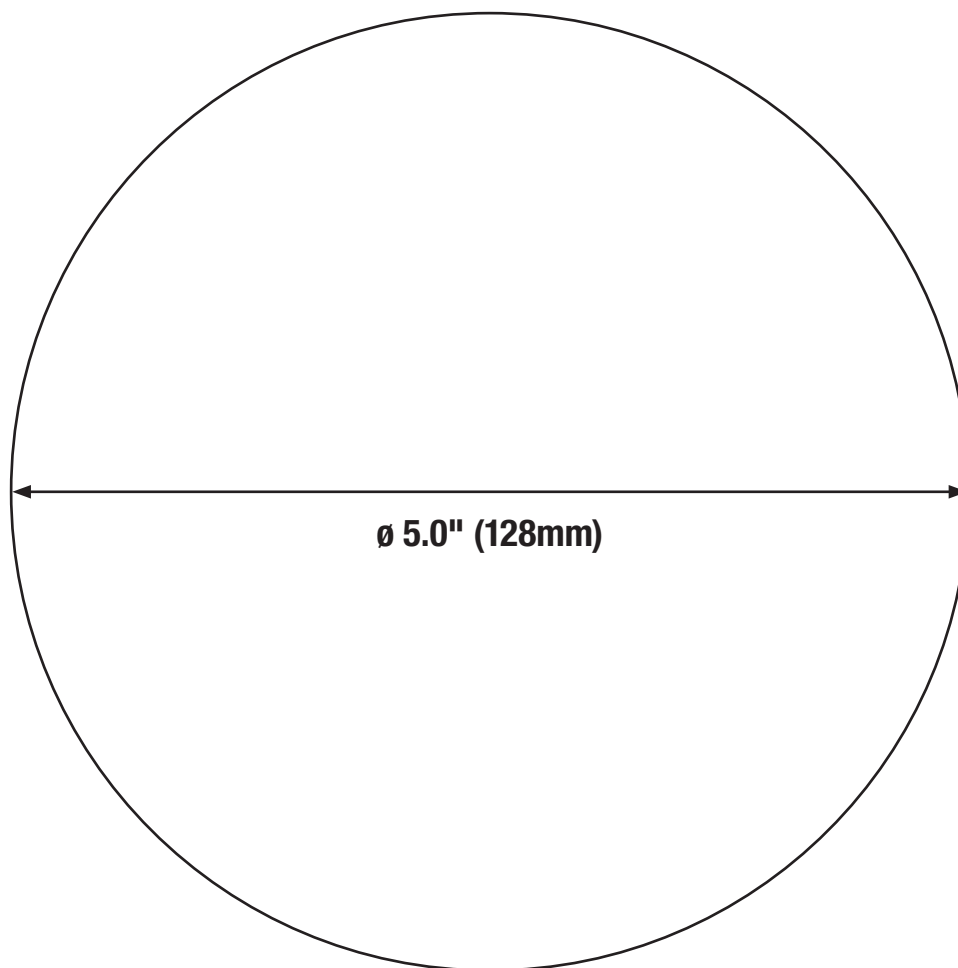


RT4 Hole Cut Template



Hole Cut Templates

RT6 Hole Cut Template



LEDVANCE LLC
181 Ballardvale Street, Suite 203
Wilmington, MA 01887 USA
Phone 1-800-LIGHTBULB (1-800-544-4828)
www.ledvanceUS.com

SYLVANIA and LEDVANCE are registered trademarks.
All other trademarks are those of their respective owners.
Licensee of product trademark SYLVANIA in general lighting.
Specifications subject to change without notice.

